

If you would like to receive this email in the future, [subscribe directly](#).

..... **ValvesSensorsSystems**

[<< Home](#)
[<< see other Publications](#)

MeasurIT Technologies Ltd. are pleased to introduce you to our November 2009 technical product update.

Yours sincerely,
 Mark Radford, info@measurIT.com



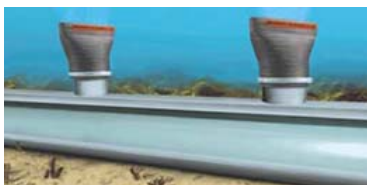
Effluent Diffusers

The first effluent diffusers were simply outfall pipes that discharged submerged rather than at the surface.

Effluent was discharged at a single point and did not disperse, often destroying the area around the outfall.

[Tideflex Effluent Diffusers](#) were introduced over 20 years ago to solve these problems and vastly improve performance.

They prevent intrusion of sand, silt and marine growth, as well as seawater. 100% Elastomer Tideflex Diffusers are flexible, durable and ideal for harsh marine environments. [read more >](#)



Case Study: Stormwater - Flood Protection

The City of Savannah, Georgia, USA suffered from flooding problems during periods of heavy rain.

Stormwater normally flows by gravity into canal that eventually empties to the ocean. The water level in the canal can rise due to high tides or periods of heavy rain and will prevent the stormwater from draining into it.



To solve the problem, a large pump station was constructed to collect the stormwater and pump it directly into the ocean when the canal was flooded.

Under normal conditions, the stormwater would continue to flow naturally through the station and into the canal. [read whole case study >](#)

See also: [Backflow prevention - Tideflex Check Valves](#)

[send me info](#)

..... **measurIT technologies**

NL-2009-II-11

Check water usage in your company!

In times of rising water prices, optimization of water flow is a most crucial issue.

Now you can check your water usage at any time.

Non-invasive, portable [FLUXUS F601 flowmeter](#):

- Non-contact - **no bacterial contamination!**
 - Clamp-on - **no breaking the line!**
 - Viton coupling - **no grease - no maintenance!**
- [read more >](#)



Wastewater Treatment - Raw Sewage

Raw Sewage is an excellent example of a material that is handled by a [pinch valve](#) better than any other type of valve.

..... Valves used to control the flow of raw sewage must be able to **handle the corrosive attack of chemicals**, must **contain odors** effectively, must not present any obstructions where material can collect and must be able to **pass the maximum flow** allowed by the pipeline **without restriction**. Valves must also be able to **withstand the abrasive attack** of grit present in the sewage. [read more about pinch valves >](#)



When it rains.. Flow regulation!

A large number of **sewage systems have inadequate capacity** to transport amounts of water produced by prolonged rain.

When the water level in the pipes rises above a certain level, basements and other low placed localities are **flooded**.

The **solution does not require any investments in larger pipes or in basins**, it only requires flow control with suitable flow regulators. [read more >](#)