

<< Home
<< Newsletters Archives

NL-2009-11-03

MeasurIT Technologies Ltd. are pleased to introduce you to our March technical product update.

Yours sincerely,
Zoe Williams, zoe@measurIT.com

Survive Decades in Abrasive Service

Pinch Valves



For more than 17 years these rugged valves have controlled the flow of slurries used during wastewater treatment

When DuPont installed a series of [pinch valves](#) in the waste-treatment facility at its Chambers Works plant

in Deepwater, N.J., the company knew that few valves in abrasive slurry service can expect a long service life. Erosion takes its toll quickly.

Despite their cautious expectations, the engineers at the facility have watched these [pinch valves](#) operate satisfactorily in abrasive slurry service for more than 17 years. The [pinch valves](#) are used for both manual and automatic throttling, and on-off applications in two of the most demanding services in the waste treatment plant - the handling of lime slurry and carbon-impregnated activated sludge.

In the lime operation, eight DN200 [pinch valves](#) are used to control the flow of lime slurry to neutralize acidic waste. In addition to being abrasive, lime slurry



can freeze in the winter. Because of their mass, metallic valves tend to remain cold longer than other sections of the pipeline. But [pinch valves](#) by Red Valve not only resist damage when they freeze, but they are rugged enough to break up a plug caused by frozen fluid in the line.

The [pinch valves](#) maintain a smooth venturi flow pattern, concentric with the center line. The smooth, full-round bore provides an unobstructed flow pattern that minimizes erosion and resist plugging.

The [natural rubber sleeve](#) isolates all the valve's operating parts from the process fluid and reduces shearing. And, thanks to flexibility offered by nylon fibres, the valve has relatively short face-to-face dimensions.

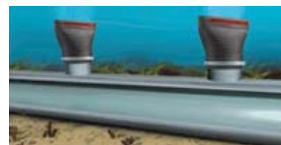
Over their 17 years in abrasive service in DuPont's Chambers Works facility, these valves have required only one [sleeve](#) replacement - a relatively easy and inexpensive task. Given no reason to expect otherwise, DuPont anticipated that these [pinch valves](#) would continue to provide unyielding service, with only minimal downtime for occasional maintenance.

Wide Bill Tideflex Diffuser Valves

The [Wide Bill Tideflex Diffuser Valves](#) open beyond 100% of the nominal diameter.

These valves allow the direct retrofit of existing diffusers without having to install oversized valves to have the same headloss at peak flow. For new diffusers, the ports/risers do not have to be increased. [Read more about this application.](#)

For more information, please contact us at +353 (0)53 942 8962 or email us sales@measurIT.com.



Y-Flex 3-Way Diverter Valves

The [Y-Flex](#) is designed to replace two separate valves and a 'Y' connection. **Each leg of the diverter can be air-operated independently** of the other leg (in either on/off or modulating mode). Since the elastomer body acts as built in actuator, there's **no separate actuator required**.

Applications: mixing, blending, feeding, pH control, bypass/diverting, filling/loading.

[read technical details: Y-Flex Diverter](#)



New Literature at www.measurIT.com

Lime systems need pinch valves
Thermal Energy Meters
TESTO measurement instruments
Level measurement of granulate - narrow/tall silos
Sanitary / hygienic sensors
Diary industry - Product Spill Detector



Our Products

Valves:
Water Control Valves - **SINGER**
[new items](#) Pinch Valves
All-Rubber Check Valves - **TIDEFLEX**
Tideflex Mixing Systems
Tideflex Effluent Diffusers

