




KM26 Magnetic Bargraph (MBG)

FEATURE		BENEFIT
HERMETICALLY SEALED <ul style="list-style-type: none"> A TRUE hermetic seal Glass tube is completely moisture free via vacuum and dry nitrogen purge procedure 		<ul style="list-style-type: none"> Eliminates potential for moisture ingress No traditional flat glass seals to maintain Great visibility of local indication for the long term
HIGH TEMPERATURE RATED (1000°F / 538°C) <ul style="list-style-type: none"> Suitable for severe service applications 		<ul style="list-style-type: none"> Can be used in boiler and heater applications Good choice for "limited access" plant locations
ROBUST / DURABLE DESIGN <ul style="list-style-type: none"> 1.25 million full span cycles of error free performance Anti-rotation interlock feature Tube holder and indicator housing constructed of Ryton or 316SS 		<ul style="list-style-type: none"> Eliminates potential for vibration induced rotation Allows for thermal expansion / rotation without tube distortion or breakage Long term operation and reliability with zero maintenance
316 STAINLESS STEEL INDICATOR HOUSING <ul style="list-style-type: none"> Rugged and durable SS construction for offshore applications 		<ul style="list-style-type: none"> Eliminates corrosion problems associated with competitor units (aluminum)
NON-CORROSIVE PIVOT POINTS <ul style="list-style-type: none"> Thermoplastic / ceramic flag design High temperature and anti-corrosion construction materials Robust flag design allows free rotation 		<ul style="list-style-type: none"> No more sticking flags and disruptions No fading in direct sunlight Operator has consistent and reliable level reading
FIELD REPLACEABLE <ul style="list-style-type: none"> Utilize existing stainless steel indicator housing Simple replacement procedure 		<ul style="list-style-type: none"> Quick turnaround replacement with just two (2) fasteners to deal with
STANDARD 316 STAINLESS STEEL RULERS <ul style="list-style-type: none"> Imperial or Metric Units Dual rulers and custom engineering units (Available) 		<ul style="list-style-type: none"> Eliminates corrosion problems associated with aluminum and other low quality materials Low cost of ownership
TWO COLOR SCHEMES <ul style="list-style-type: none"> Yellow / Black (Standard) Red / White (Optional) 		<ul style="list-style-type: none"> Excellent for indoor and outdoor use with long distance visibility Great replacement for traditional sight glasses
EASILY RETROFITTED TO COMPETITOR MLGs <ul style="list-style-type: none"> User friendly design offers flexibility to adapt to most competitor models 		<ul style="list-style-type: none"> Simply provide your center to center MLG dimensions & ruler type (imperial or metric)
STANDARD INDICATOR FOR CRYOGENIC MLGs <ul style="list-style-type: none"> Suitable for temperatures down to -320°F / -195°C 	<ul style="list-style-type: none"> Provides operator maximum visibility and local indication for cold service MLG installation 	

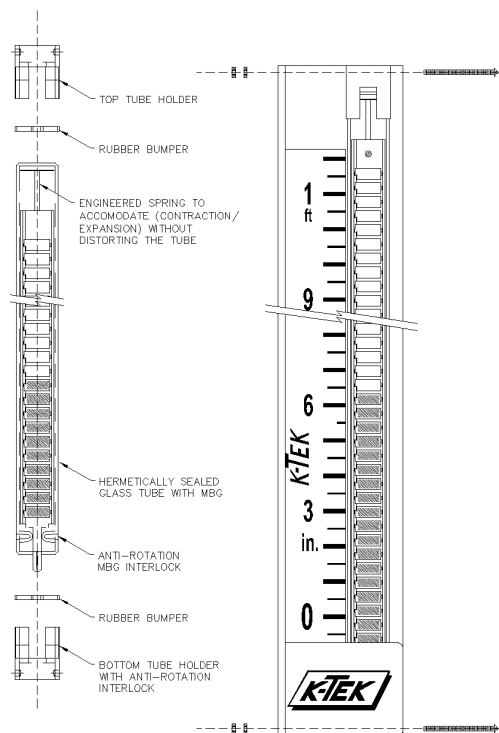
Available MBG Color Schemes



Yellow / Black

Red / White

Hermetically Sealed MBG Assembly Diagram



Available MBG Indicator Types

Model	Description	Temp Rating
High Temperature	M1P Yellow/Black MBG with Permanently Sealed Lexan Tube	200°F / 93°C
	M1PH Yellow/Black MBG with Permanently Sealed Lexan Tube and Insulation Pad	300°F / 149°C
	M2P Red/White MBG with Permanently Sealed Lexan Tube	200°F / 93°C
	M2PH Red/White MBG with Permanently Sealed Lexan Tube and Insulation Pad	300°F / 149°C
	M1G Yellow/Black MBG with Hermetically Sealed Glass Tube	650°F / 343°C
	M1GHS Yellow/Black MBG with Hermetically Sealed Glass Tube and Insulation Pad + TempKoat™	1000°F / 538°C
	M2G Red/White MBG with Hermetically Sealed Glass Tube	650°F / 343°C
	M2GHS Red/White MBG with Hermetically Sealed Glass Tube and Insulation Pad + TempKoat™	1000°F / 538°C
Cryogenic	CM1A Yellow/Black MBG with Lexan Frost Extension and 2" Insulation	-100°F / -73°C
	CM2A Red/White MBG with Lexan Frost Extension and 2" Insulation	-100°F / -73°C
	CM1B Yellow/Black MBG with Lexan Frost Extension and 3" Insulation	-200°F / -129°C
	CM2B Red/White MBG with Lexan Frost Extension and 3" Insulation	-200°F / -129°C
	CM1C Yellow/Black MBG with Lexan Frost Extension and 4" Insulation	-320°F / -195°C
	CM2C Red/White MBG with Lexan Frost Extension and 4" Insulation	-320°F / -195°C